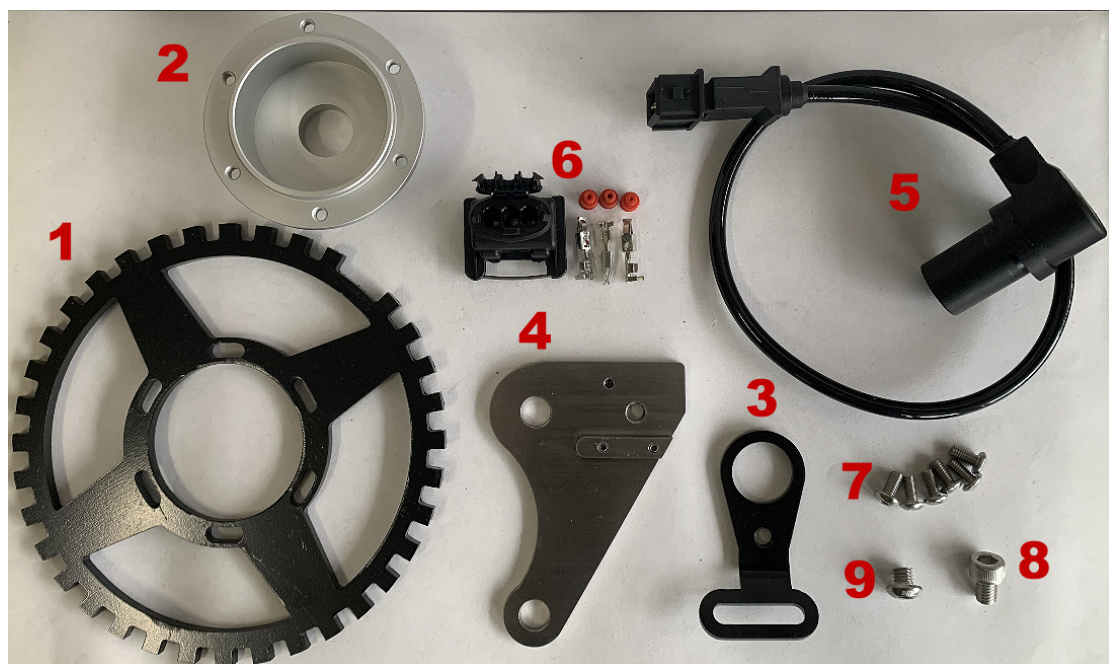


## Kit Contents:

- 1 x 36-1 Trigger wheel
- 1 x 36-1 Wheel seat
- 1 x Crank sensor upper bracket seat
- 1 x Crank sensor lower bracket seat
- 1 x Hall Effect Crank sensor
- 1 x Crank sensor connector
- 6 x M4 - 8MM Round hexagon socket screw
- 1 x M6 - 8MM Hexagon socket screw \* 1
- 1 x M6 - 6MM Round hexagon socket screw \* 1



## **Video Install instructions:**

Installation instructions can be found on YouTube at the link below.

<https://cmdiy.co/triggersensorinstall>



## **Instructions:**

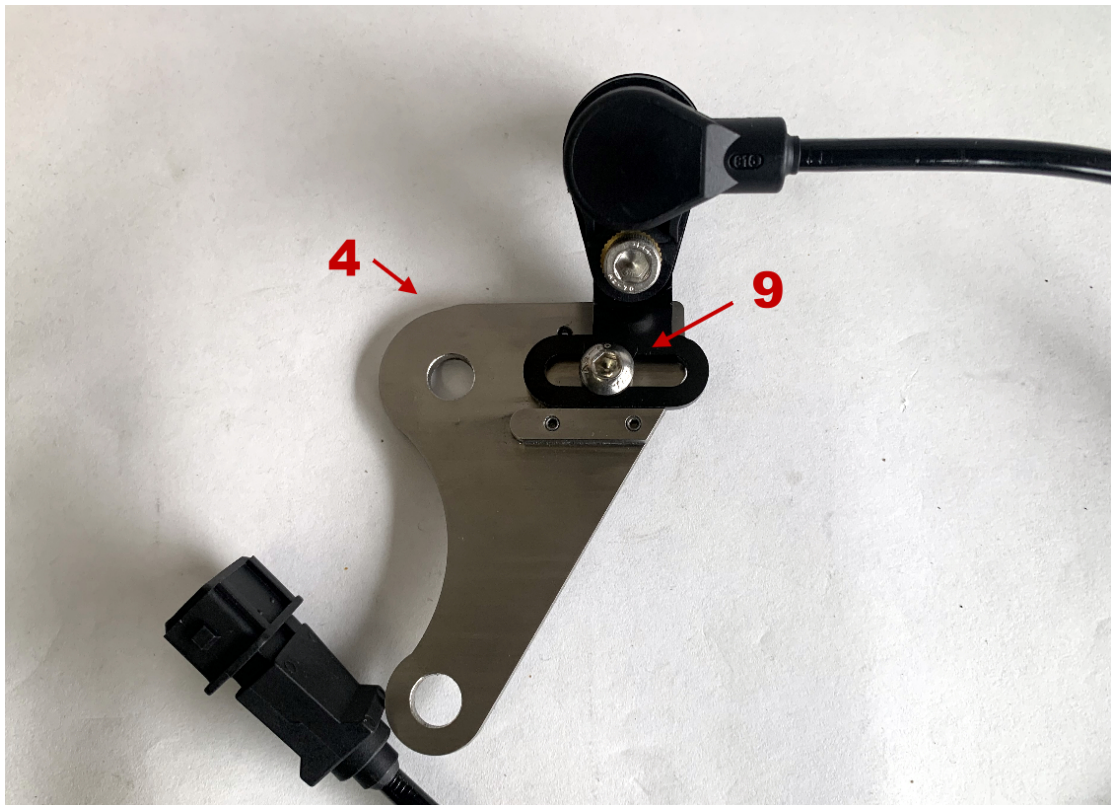
### **Step 1:**

First put (5) Crank sensor into (3) crank sensor seat, and put (8) screw on



### **Step 2:**

Combine with the lower bracket seat( 4) and loosely tighten with screws(9)

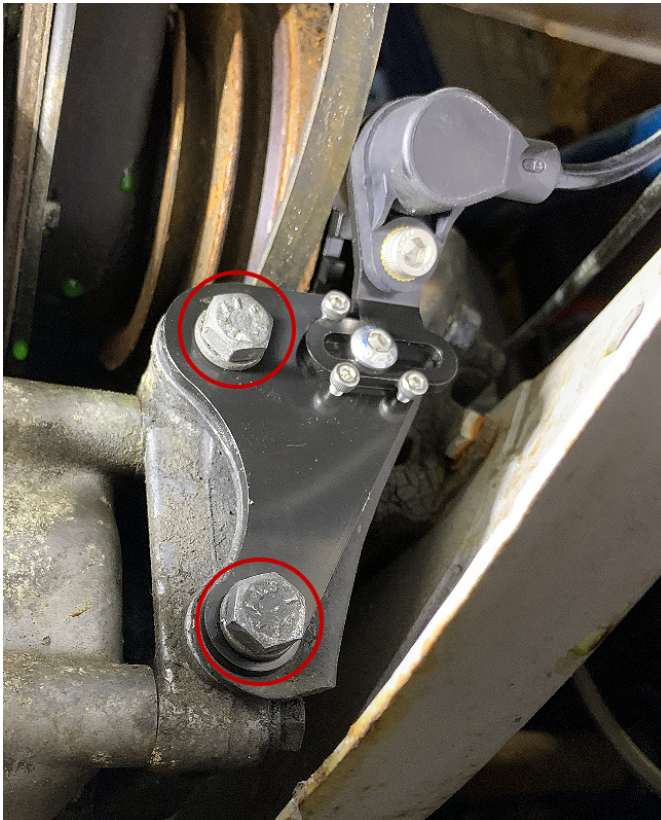


### **Step 3:**

Unbolt and use the original lower engine mount bracket screws to secure the new



bracket in place, on top of your existing radiator bracket.



#### **Step 4:**

Bolt (1) 36-1 trigger wheel onto the (2) wheel seat using (7) screws



#### **Step 5:**

Install the trigger wheel assembly onto the pulley wheel



**Step 6:**

Please align the gap with the trigger wheel





### Step 7:

After trigger wheel installation, loosen the screws to align the sensor with the trigger wheel



### Step 8:

Ideally leave 1 - 3mm gap in between

